

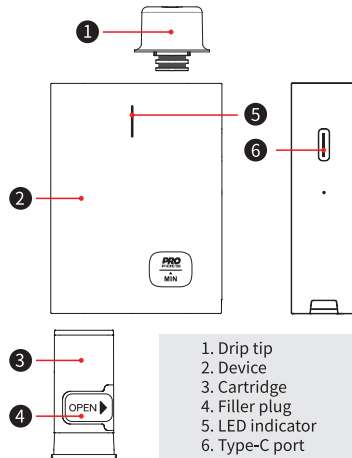
UWELL HAVOK

User Manual

HAVOK R Pod System

©2024 By SHENZHEN UWELL TECHNOLOGY CO., LTD.
All Rights Reserved.

Illustration



Quick Guide

1. Take the cartridge off the device. Open the filler plug and fill the cartridge with the e-liquid. Put the filler plug back.
2. Remove the insulating film on the top of the cartridge and install it into the device. Let the product sit for 10 minutes.
3. Draw to vape.

Specifications

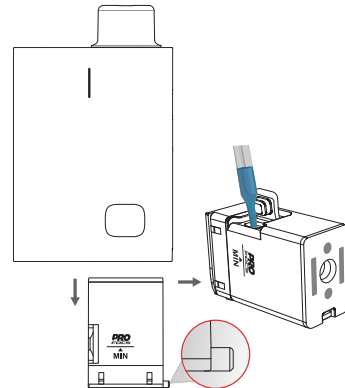
- Materials: PCTG, Aluminium Alloy
- Dimensions: 75.65 mm x 47.41 mm x 18 mm
- Net Weight: Approx. 62 g
- E-liquid Capacity: 3 ml
- Output Power: Maximum 22 W
- Cartridge Specification: FeCrAl Meshed 0.6 Ω
- Battery Capacity: 950 mAh

Instructions

1. Cartridge filling and replacement

- a. Take the cartridge off the new device for the first filling, and remove the insulating film on the top of the cartridge.

- b. Open the filler plug in the direction shown in the following graphic and fill it with the e-liquid. Put the filler plug back after filling.
- c. Insert the cartridge into the device in the direction shown in the graphic (the bump edge points outwards).



Attention:

- a. Insert the nozzle of the e-liquid bottle into the filling port to fill it with the e-liquid. Please put the filler plug back as soon as the filling is done and make sure it is properly sealed to prevent e-liquid leakage.
- b. Let the cartridge sit for 10 minutes after the first filling to avoid coil burning.
- c. Please make a timely refilling when the e-liquid is under the MIN level to avoid coil burning.

2. Vaping

Draw to vape, and the LED indicator will stay on during vaping.

3. Battery level indication

During vaping, a green light indicates the battery level is over 60%, a blue light indicates the battery level is 30%-60%, and a red light indicates the battery level is under 30%.

4. Charging

The indicator lights on when connecting to a power source through the Type-C cable. A green light indicates the battery level is high,

a blue light indicates the battery level is medium, and a red light indicates the battery level is low. The green light will stay on when the charging is done.

5. Protection and Indication

- Short-circuit protection: When short-circuit occurs, the light will flash 3 times in red when vaping, and the device will stop outputting.
- Low voltage protection: When the device is at low power, the light will flash 10 times in red, and the device will stop outputting.
- Overtime protection: The light will flash 5 times in green to indicate an over 8-second vaping, and the device will stop outputting.
- Open-circuit protection: when an open-circuit occurs under a no cartridge or disconnection situation, the light will flash 3 times in blue, and the device gives no output during vaping.
- Cartridge insertion indication: When inserting the cartridge into the device, the light will flash twice in green.
- Cartridge removal indication: When taking the cartridge off the device, the light will flash twice in blue.

Warm Tips

- Please charge with the certified power adaptor (5V/3A) and USB cable.
- Please remove the cartridge from the device and store it separately when you travel by air, for the air pressure change may cause leakage.
- Avoid high temperature, low temperature, flammables, explosives, water, and humid environment during the use or storage of the product. Please do not keep the product with hard objects to avoid damage. Please charge the device at least once a month.

WARNING

The new FDA regulations apply to the sales and distribution of all E-cig products.

- Do not give away free samples.
- It is prohibited to sell all types of E-cig products to people under the age of 21.
- It is prohibited to sell all types of E-cig products in vending machines except those specified by laws and regulations.

- It is prohibited to introduce products with "light", "low", "mild", or other similar descriptions in labels or advertisements into interstate trade.
- It is strictly forbidden to be used by young children, pregnant women, and women during breastfeeding or patients with heart disease, hypertension, diabetes, depression, and asthma. Keep the product out of the reach of children, non-smokers, and animals.
- Please do not drink it.
- It may contain nicotine, which is known to be a highly addictive substance.
- Swallowing or skin contact with this product may cause intoxication.
- Please keep away from flammables and explosives when using or charging to avoid hazards.
- Do not disassemble the product. The company won't be responsible for any product damage or personal injury caused by the improper operation.
- Please consult your local vape shop or contact us through service@myuwell.com if you need help using the product.

Product Verification

- Visit UWELL's official website www.myuwell.com to verify under the SUPPORT navigation bar.
- Please scan the QR code on the package with your phone camera to verify. The result will be displayed on the page.
- Or you can enter the 16-bit anti-counterfeit code on the surface of the user manual into the input box, and the result will be displayed within seconds.

Attention:

Please keep your package and the warranty card.

Warranty Period

180 days from the purchasing date.

Warranty Parts

Device and atomizer only. Coil and cartridge are excluded.

Warranty Service Excluded Conditions

- Expiration of warranty period.

- Damage caused by failure to use, maintain and keep the product according to the requirements of the product instructions.
- Damage caused by maintenance service personnel non-authorized by UWELL.
- Damage caused by using inferior accessories of other brands.
- Damage caused by the force majeure.

Warranty Service Guide

- You can ask the shop you purchased your vaping device for the warranty service.
- You can visit www.myuwell.com and ask for warranty service under the SUPPORT navigation bar.
- You can contact us through service @myuwell.com if you have any questions.

Please use your phone camera to scan the QR code for further information.

